

Orienting the SMART Board interactive whiteboard



Pen tray buttons

Orientation ensures your touch is registered accurately when you are using the SMART Board interactive whiteboard. If you press the interactive whiteboard with your finger and your cursor appears somewhere other than where you are pressing, try orienting the interactive whiteboard.

Quick Orientation



1 To orient the interactive whiteboard, press and hold the **Keyboard** and **Right Mouse** buttons simultaneously until the Orientation screen appears.

2 Begin the orientation process at the upper left corner of the Orientation screen. Press your finger or pen firmly on the center of each cross in the order indicated by the white, diamond-shaped graphic.

TIP: If you are not satisfied with the precision of a particular orientation point while orienting, press one of the pen tray buttons or the left arrow key on your keyboard to redo the previous orientation point.

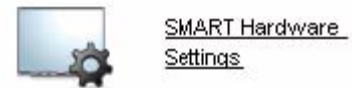
Changing Orientation Settings

Increase the detail of calibration for applications that require a greater amount of precision.

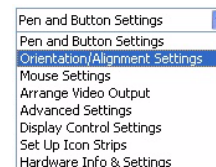
1 Press the **SMART Board** icon in the Windows Notification Area, and select **Control Panel** from the SMART Tool menu.



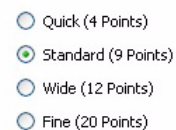
2 From the Control Panel window, press the **SMART Hardware Settings** button.



3 The SMART Hardware Settings window will open. Select **Orientation/Alignment Settings** from the drop-down menu.



4 Select **Fine (20 Points)** and press **OK** to apply the new orientation and alignment settings.



5 From the Control Panel window, press the **Orient** button to begin the orientation process.

